

CAM360 AmnioGraft™ Set-up Guide

72-hour Collagen Shield Edition

Supplies for CAM360 AmnioGraft User

12mm Sterile CAM360 AmnioGraft (CAM360 AG) Product

Collagen Shield (CS)

Balanced Salt Solution (BSS)

Sterile Forceps

Sterile Polyester Tipped Applicator Swab



Setting up CAM360 AG on a CS



1. Open CS package in a sterile field.

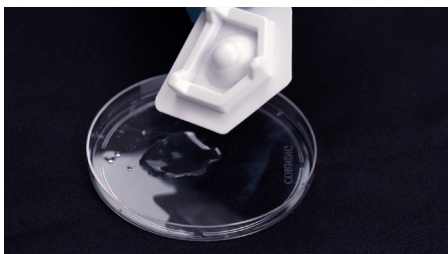
NOTE: CS comes inverted, inside out.



2. **Fully** submerge CS in BSS for 30 sec.



3. After CS is hydrated, revert the CS so that it is no longer inside out.



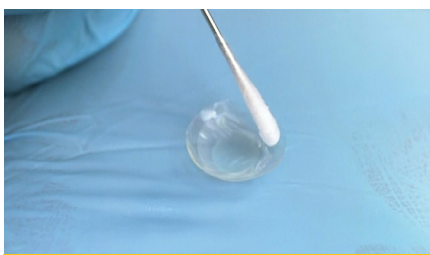
4. Remove excess fluid from CS and the tray.



5. Retrieve CAM360 AG and place on CS, gridded side down.



6. Use swab and forceps to gently peel off the paper backing.



7. Use swab to smooth out CAM360 AG in the CS.



CAM360 AG Placement

After CAM360 AG has been smoothed out on the CS, allow it to sit for 30 seconds to 2 minutes prior to placement.

Note: Forceps are used for demonstration purposes only, and are not meant to be used for insertion.

Clinical Application



Mild to Moderate SPK/DED



Neurotrophic Keratitis
Stage 1

Application Guidance

72-hour Collagen Shield (CS)

With CAM360 AmnioGraft now prepared, it's time to apply it to the eye. Follow these best practice steps for optimal comfort.



Treatment Duration
up to **72 Hours**

- 1 Anesthetize the Eye:** Apply a drop of anesthetic prior to placement. This will help reduce the potential discomfort associated with the low pH of the CS.
- 2 Antibiotic Drops:** A prophylactic antibiotic drop on the ocular surface prior to placement is recommended.
- 3 Placement & Hydration:** Place the prepared CS and CAM360 AG on the ocular surface. Once placed, apply 2-3 drops of saline to ensure complete hydration of the CS. Examine for and address any air bubbles after insertion.
- 4 Taping Methods:** After placement, use one of the following methods:
 - Patch (Total Closure)
 - Nictavi Patch (Partial Closure)
 - Tape Tarsorrhaphy (Partial Closure)
- 5 Taping Guidance:** The treated eye should remain taped for 48-72 hours to retain the CS as it dissolves. When removing the tape, do so gently to avoid excessive pulling on the eyelid, as the CS/tissue could fall out.
- 6 Preservative-Free Artificial Tears:** If using the Nictavi Patch or Tape Tarsorrhaphy, the patient should apply preservative-free artificial tears at least 3 times daily, during treatment.
- 7 Steroid Use:** The use of a concomitant steroid during treatment is **not** necessary or preferred.
- 8 Post-insertion Evaluation:** Ensure proper centration of CS and CAM360 AG over cornea.

Allergies & Warnings

- Patient may experience a temporary stinging sensation following the insertion of the CS which should neutralize quickly.
- This application method is not suitable if the patient has a known allergy to collagen or bovine products.
- CS wear time should not exceed 72 hours. Prolonged wear can result in bacterial or fungal infections.
- If the patient presents with any Defects, Ulcers, EBMD or RCE this product may not be suitable.