

## What are the symptoms of MDE?

It is possible that a patient suffering from MDE has no symptoms at all. Other patients may have a variety of symptoms like:



Dryness/Redness



Excess Tearing



Sensitivity Loss



Pain from Blinking

Blinking makes these symptoms worse. Reading, playing golf, knitting, or other activities that require looking down for a long period of time, may worsen irritation and redness. the irritation and redness worse.

visit [www.DiscoverMDE.com](http://www.DiscoverMDE.com) for more information

98% // 60+ Suffer from MDE<sup>4</sup>  
PATIENTS AGE

## Doctor Testimonials for Managing Mechanical Dry Eye

*"The Reservoir Restoration method offers unparalleled benefits to patients with Conjunctivochalasis (CCh): improved tear drainage, restored normal anatomy and blinking, and reservoir capacity. This restored mechanical function is what provides the symptomatic relief that the patient experiences."*

**- Arla Genstler, MD - Genstler Eye Center - Topeka, KS**

*"For patients with Dry Eye Syndrome that do not respond to conventional topical therapies, or for patients who have purely visual symptoms of Mechanical Dry Eye, the Reservoir Restoration procedure with cryopreserved amniotic membrane offers the chance at significant relief by reducing inflammation, promoting regenerative healing, and improving visual and tear stability"*

**- Neel Desai, MD - The Eye Institute of West Florida - Largo, FL**

## Patient Testimonial for Managing Mechanical Dry Eye

*"Dr. Sally Mellgren performed the above procedure [AmnioGraft for conjunctivochalasis] on my right eye and on my left eye. I experienced no problems with the recovery from the procedures. My vision and clarity was much improved and I would recommend it for others experiencing the same problems"*

**- Shirley Slentz**

1. Zhang, X., Li, Q., Zou, H., Peng, J., Shi, C., Zhou, H., ... & Li, Y. (2011). Assessing the severity of conjunctivochalasis in a senile population: a community-based epidemiology study in Shanghai, China. BMC Public Health, 11(1), 198.
2. Cheng, A. M., Yin, H. Y., Chen, R., Tighe, S., Sheha, H., Zhao, D., ... & Tseng, S. C. (2016). Restoration of the fornix tear reservoir in conjunctivochalasis with fornix reconstruction. Cornea, 35(6), 736.
3. <http://www.osref.org/medical-education-materials/conjunctivochalasis.aspx>
4. Mimura, T., Yamagami, S., Usui, T., Funatsu, H., Mimura, Y., Noma, H., ... & Amano, S. (2009). Changes of conjunctivochalasis with age in a hospital-based study. American journal of ophthalmology, 147(1), 171-177.

 **biotissue**<sup>®</sup>  
A TissueTech Company  
[www.biotissue.com](http://www.biotissue.com)

SM-042. Rev C ©2019 Bio-Tissue All rights reserved.

**AMNIOGRAFT<sup>®</sup>**

# FOR MECHANICAL DRY EYE

Conjunctivochalasis (CCh)

**All you see is just the tip of the iceberg!**



 **biotissue**<sup>®</sup>  
A TissueTech Company

*All you see is just  
the tip of the iceberg!*

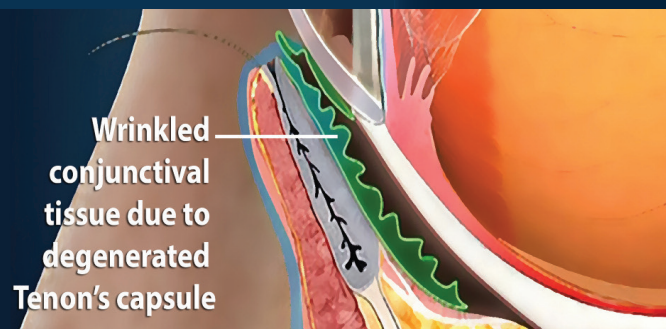
## What is Mechanical Dry Eye (MDE)?

Mechanically Dry Eye (MDE), which your eye doctor may refer to as Conjunctivochalasis or CCh is an age-related disorder, often found in individuals over 60 years of age. Normal eyes have a space between the eye and the lower eyelid that hold a reservoir of tears. Tears from this reservoir are spread over the eye during the blinking process. In MDE, excess folds of loose and wrinkled conjunctiva can block this tear reservoir, preventing tear retention, or spreading, and causing dry eyes.

## Implications of MDE

Sometimes, the wrinkled conjunctival tissue can be seen in the tear meniscus, at the edge of the eyelids. The tissue you see is like the tip of an iceberg, which reflects only a portion of the underlying condition. When you blink, this wrinkled conjunctiva can rub against your eye, causing further irritation and redness to an already inflamed and dry eye.

Patients with Dry Eye Syndrome who do not respond to medical treatment could have concurrent MDE. Some alternative treatments may actually worsen the condition long term.



*When you blink, this wrinkled conjunctiva can rub against your eye, causing further irritation and redness to an already inflamed and dry eye.*

## MDE Treatment

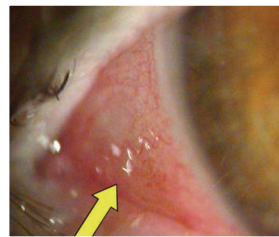
### Short Term

When patients become symptomatic, the first line of treatment is medical. The goal is to reduce the effects of Mechanical Dry Eye, especially the disruption of the tear film. Ocular lubricants tend to be first-line medications for Mechanical Dry eye as they can replace reduced tear film on the eye. Prescription eye drops are often used to help the eye produce more tears. However, ocular lubricants and prescription eye drops can only provide short term relief for the patient, they do not solve the root cause of Mechanical Dry Eye.

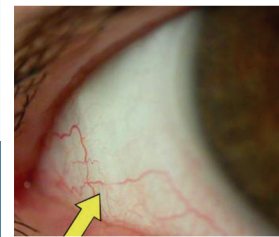
### Long Term

For long term relief from Mechanical Dry Eye, your eye doctor may recommend a fast, uncomplicated outpatient procedure that can address your mechanically remove dry eye and help restore normal eye function and appearance. The procedure is known as Reservoir Restoration. This procedure allows your eye doctor to surgically restructure the loose and wrinkled conjunctiva blocking the tear reservoir in your eye.

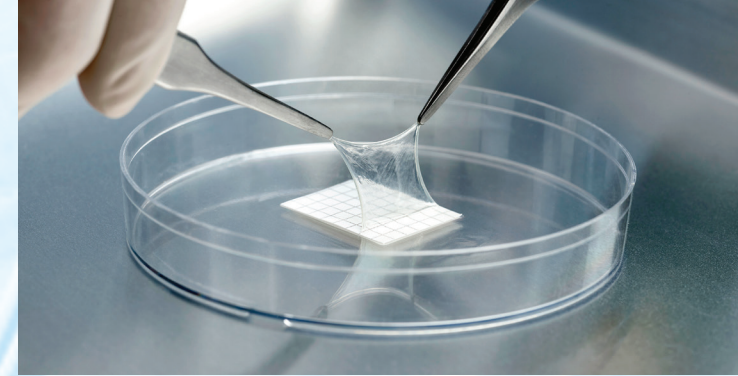
Your normal anatomical reservoir can be restored using AmnioGraft. This adjunct therapy addresses the root cause of your dry eye, with most patients experiencing a fast recovery and significant reduction in inflammation.



MDE *before* treatment



MDE *after* AmnioGraft



# AMNIOGRAFT®

## What is AmnioGraft?

AmnioGraft is an amniotic membrane tissue graft. Amniotic membrane is the innermost lining of the placenta that has many regenerative properties. The natural, physical properties of AmnioGraft are similar to the tissue that covers the white of your eye, the conjunctiva.

## What are the benefits of AmnioGraft?

AmnioGraft can expedite your recovery by actively reducing inflammation, promoting regenerative healing, and suppressing pain to help you get back on your feet and return to your normal quality of life faster, with great-looking eyes.

## Is AmnioGraft Safe?

AmnioGraft is a safe, effective treatment provided by a tissue bank regulated by the FDA. Each tissue has to pass rigorous quality control steps before being released for use. AmnioGraft has never been associated with any serious adverse events in the last 20 years of widespread clinical use.

## A simple biological procedure to treat dry eye.

## What can I expect after procedure?

After the procedure, the eye will be patched overnight. Your doctor may prescribe topical drops and/or ointments to help your eye heal. There may be some discomfort during the first few days after operation, but you will be able to resume full activity within 48 hours. Full healing of your eye should be complete within two to three weeks.